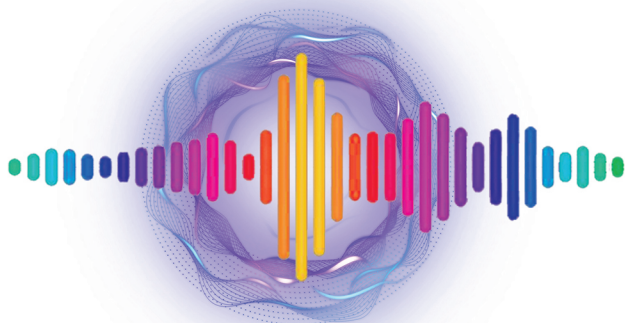


# LED WiFi Music Controller

LED WiFi 音乐控制器

(涂鸦智能版—Tuya Smart)



涂鸦智能  
Tuya Smart

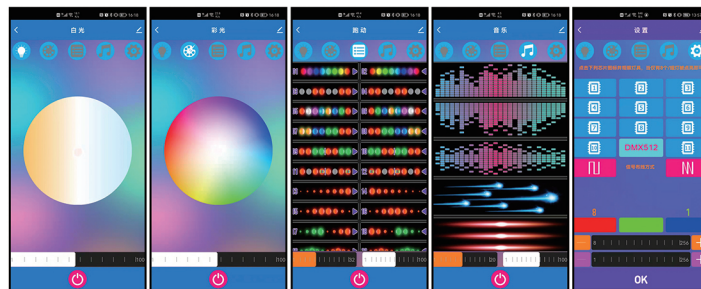


智能生活  
Smart Life



鸿蒙/安卓/苹果 (HarmonyOS/Android/iOS)

型号MODEL: LC2000B-TY01



产品名称 (Name) : LED WiFi 音乐控制器 (LED WiFi Music Controller)

产品型号 (Model) : LC2000B-TY01 输入电压 (Vin): DC5-30V @ 0.6A

控制点数: 8~2048 遥控方式: Tuya APP 灯序设置: RGB 线序任意设置

速度调节: 32级可调 智能记忆: 参数自动保存 音频声控: 环境/线路音频输入

亮度调节: 白光/彩光/动态/音乐均可1%-100%独立亮度调节, 互不影响

内置效果: 白光色温调节 + 彩光颜色调节 + 系列组合动态效果 + 多种音乐频谱

Control Points : 8 ~ 2048 Control Mode : Tuya APP Speed Settings : 32 Level

Sequence Settings : RGB Arbitrary setting Config Save : Auto save config

Music Input : MIC/Line input Brightness adjustment: White/Color/Dynamic

/Music can be adjusted 1% - 100% independently without affecting each other

Effect : Color temperature adjustment + Color adjustment + Dynamic effect  
+ Music spectrum (MADE IN CHINA)

支持芯片: SK6812/WS2801/WS2811/WS2812/TM1804/TM1804B/TM1809

TM1812/TM1923/TM1934/TM1913/TM1926/TM1826/TM1829/TM1914

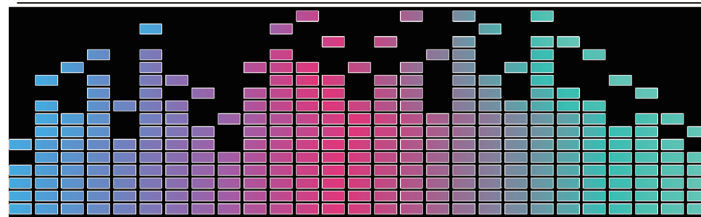
TM1914A/UCS1903B/UCS1903N/UCS1909B/UCS1912B/UCS2909B

UCS2912B/UCS2903B/GS8205/GS8206/SM16703/SM16703P

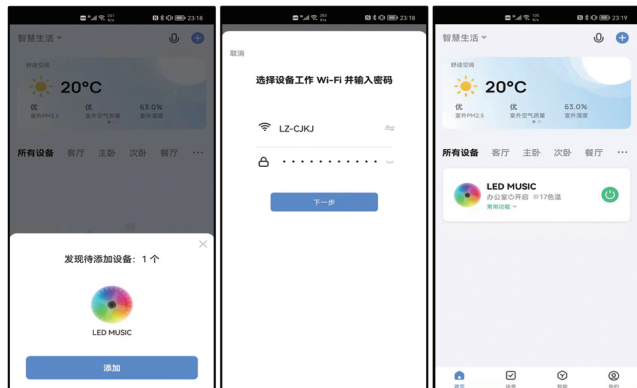
SM16704P/SM16704PB/SM16709P/SM16712P/INK1002/INK1003

LX1203/LX1603/LPD8806/APA-102/P9813/P9823/P9883等, 更多型号请以

APP为准 (More models please view APP)。



## 智能生活APP配网 Smart Life APP Add device



自动发现设备  
Auto discovery device

输入WIFI密码  
Enter WiFi password

添加设备成功  
Add device OK

## 参数设置 SETTING



进入设置界面按以下步骤进行参数设置:

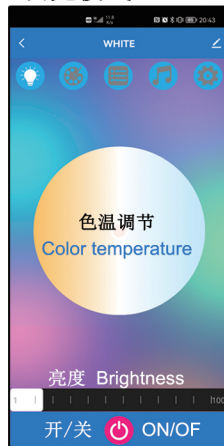
①芯片选择: 点击图标当您看见8个或8组LED亮红或绿或蓝即可; ②布线方式: 选择信号线布线方式; ③RGB顺序: 观察当前亮灯颜色点击对应的R、G、B按钮直到LED亮白光时即可;

④控制点数: 调节点数高度和宽度; ⑤保存。

Enter the setting interface and set the parameters according to this steps:

①Click the icon and observe the LED, If you see 8 (Group) LEDs lights red or green or blue is OK; ②Select the signal wire routing type; ③Adjust RGB order: Observe the current light color and click the corresponding R、G、B button until the LED is white); ④Adjust LED height and width; ⑤Save settings.

## 白光模式 White



关于语音控制:

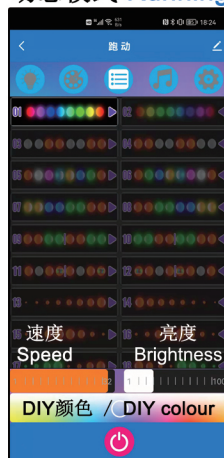
目前支持天猫精灵、小智管家、百度小度、Amazon Alexa、Google Assistant、Yandex Alice等AI音箱 (可以控制开关、亮度、颜色等), 后续逐步开放其他品牌的AI音箱。

备注: AI音箱非必备, 您可以根据需求购买相应品牌及型号。

## 彩光模式 Colour



## 动态模式 Running

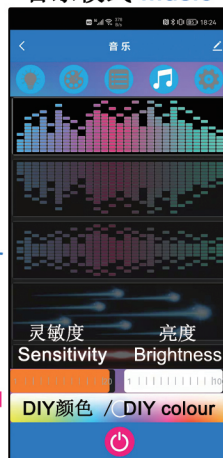


About voice control:

at present, it supports AI speakers such as tmall elf, Xiaozhi housekeeper, baidu Xiaodu, Amazon Alexa, Google assistant and yandex Alice (Control ON/OFF, brightness, color)

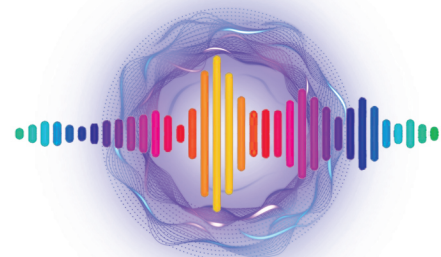
Note: AI speakers are not necessary. You can buy corresponding brands and models according to your needs.

## 音乐模式 Music



# LED WiFi Music Controller

## LED WiFi音乐控制器 (涂鸦智能版—Tuya Smart)



## 用户手册 User manual

涂鸦智能  
Tuya Smart



智能生活  
Smart Life



(型号Model:LC1000A-TY01/LC2000B-TY01)



前言 Foreword

感谢您选用本产品，在安装和使用前请仔细阅读以下信息。  
Thank you for choosing this product,Please read the following information carefully before installation and use.

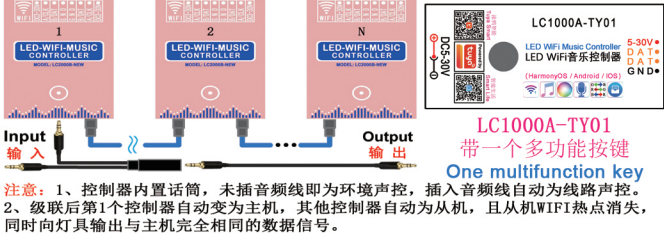
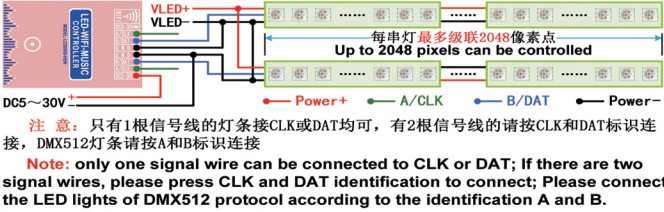
产品介绍 Product description

本产品是用于控制LED灯条、点光源及像素屏等产品的功能强大的控制器。包括两个型号：LC1000A-TY01/LC2000B-TY01。  
This product is a powerful controller specially used to control LED light bar, LED point light source and LED pixel screen.It includes three models: LC1000A-TY01 / LC2000B-TY01.

产品参数 Product parameters

产品型号 Models	LC1000A-TY01	LC2000B-TY01
控制点数 Points	8~1024	8~2048
输入电压 Input voltage	DC5~30V	DC5~30V
外形尺寸 Size(mm)	L64 x W30 x H10	L120 x W65x H24
输出信号 Signal mode	TTL-DAT/CLK	TTL-DAT/CLK DMX512
同步方式 Sync Type	不可同步 Asynchrony	网线级联可同步 Network cable can synchronously
音乐控制 Music input	环境音乐 Environmental	环境/线路输入 Environmental / Line input
速度调节 Speed	32级可调 32 Levels	
灵敏度 Sensitivity	20级可调 20 Levels of MIC sensitivity	
操作方式 Control Type	涂鸦APP控制（鸿蒙/安卓/苹果） Tuya APP Control (HarmonyOS/Android/iOS)	
亮度调节 Brightness	1%~100%（渐变柔和调节）/ Gradient adjustment	
RGB 设置 RGB Settings	智能 RGB-RGB-GRB-GBR-BRG-BGR 线序 Arbitrary of RGB-RGB-GRB-GBR-BRG-BGR	
内置效果 Effect	白光/彩光/跑动/音乐 / White + Colour + Run + Music	
智能记忆 Config Save	参数自动记忆 / Automatic parameter saving	

接线图（LC2000B-TY01） Wiring diagram



注意：1、控制器内置话筒，未插音频线即为环境声控，插入音频线自动为线路声控。2、级联后第1个控制器自动变为主机，其他控制器自动为从机，且从机WiFi热点消失，同时向灯具输出与主机完全相同的数据信号。  
Note: 1. The controller has a built-in microphone. If the audio cable is not plugged in, it is the ambient voice control. After the audio cable is plugged in, it is the line voice control automatically. 2. After cascading, the first controller automatically becomes the host, and other controllers automatically become the slave, and the WiFi hotspot of the slave disappears, and at the same time, the same data signal as the host is output to the lamp.

以上接线图仅以“LC2000B-TY01”控制器为准，LC1000A-TY01十分小巧精致，请按外壳标识操作。此外，LC1000A-TY01可以通过按键进行开或关LED，也可以选择效果模式，并且长按可以重新配网。  
The above wiring diagram is only based on model "LC2000B-TY01" controller, LC1000A-TY01 wiring mode is similar to this, please follow the product shell identification, refer to the above Wiring diagram is enough. LC1000A-TY01 can turn on or off the led by pressing the key, or select the effect mode, and long press to redistribute the network.

首次使用 First time using

1、本产品配合涂鸦账号使用，未注册涂鸦账号的，请先注册账号；  
2、本产品需要连接路由器使用，请确保路由器可以正常访问外网；  
3、本产品支持“涂鸦智能”和“智能生活”两款APP软件控制，两款APP均可用手机或平板在应用市场/应用商店搜索下载并安装，也可以扫描产品手册或产品包装上对应的二维码下载APP即可；

- 4、配网操作：控制器连接LED灯具并通电，当LED灯亮起时断电，连续操作5次控制器将进入配网状态，此时LED灯亮白光渐变呼吸；  
备 注：LC1000A-TY01也可长按多功能键进入配网状态。
- 5、启动涂鸦APP并登录账号，将自动发现本控制器，完成添加即可。
1. This product is used with "Tuya smart" or "Smart Life" account. If not registered, please register the account first;  
2. This product needs to be connected to the router. Please ensure that the router can normally access the external network;  
3. This product supports the control of "Tuya smart" and "Smart Life" app software. Both apps can be searched, downloaded and installed in the application market / app store by mobile phone or tablet, or can be downloaded by scanning the corresponding QR code on the product manual or product package;  
4. Distribution network operation: the controller is connected to the LED lamp and powered on. Power off when the LED is on, After continuous operation for 5 times, the controller will enter the distribution network state. At this time, the LED lamp will light white and breathe gradually;  
Note: LC1000A-TY01 can also enter the distribution network state by long pressing the multi-function key.  
5. Start the "Tuya smart" app and log in to the account to automatically find the controller and add it.

